



TRIBAL
ART

The Musée des Confluences
Picasso Primitif • The Inner Eye
Galwa Masks • African Maternities
The Rinehart Portraits
People, Auctions, News ...

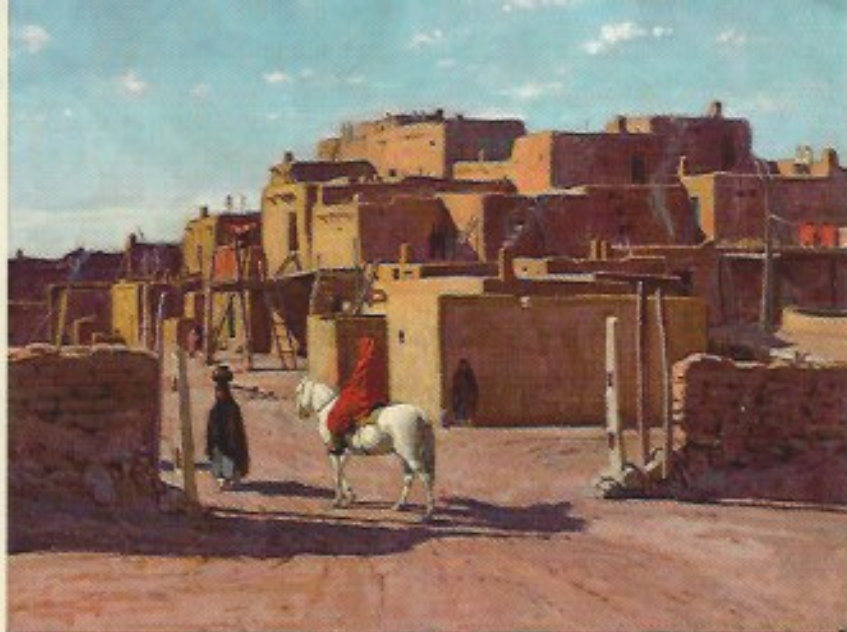
YELLOWMAGPIE
— ARAPAHOE —

Santa Fe in August

SANTA FE—The Whitehawk shows have been a Santa Fe tradition for thirty-nine years now. Recently *The Antique Indian Art Show* and *The Antique Ethnographic Art Show* that long were two end-to-end events were merged into what is now *The Antique Indian & Ethnographic Art Show*, which features more than 100 dealers offering an array of artworks from around the world. Native American art is prominent, as would be expected, but there is also art from the Pre-Columbian Americas, Africa, Indonesia, the Pacific, and Asia as well. Spanish colonial art from the Americas is also a visible element. This year the show will be held August 12–14, 2017, following an opening reception on the evening of August 11, all at the Santa Fe Community Convention Center located downtown just a few blocks from the Plaza.

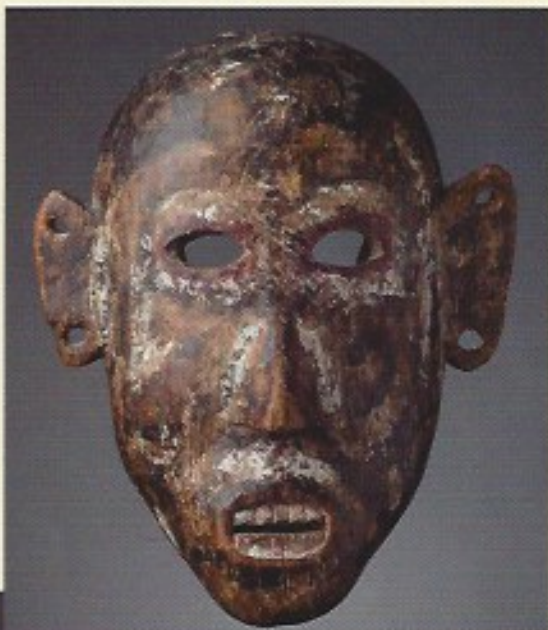
Opening the evening of August 10 and running August 11–13 across town at the El Museo Cultural de Santa Fe in the Santa Fe Railyard will be *Objects of Art Santa Fe*, now in its eighth year. This will feature some seventy gallery owners and other traders offering a global melding of the world's best antiquities and fine art—from ethnographic materials to modernist furniture to contemporary art and fashion. Emphasis is on global art, culture, and creativity through hand-picked objects intended to appeal to the sensibilities of modern-day collectors who are not afraid to mix the old and the new.

This will be followed by the *Antique American Indian Art Show Santa Fe*, also at El Museo. This will open the evening of August 15 and run August 16–18. This corresponds to the annual Santa Fe Indian Market (August 19–20), a massive event that is largely focused on contemporary Native American arts and crafts. This show brings a significant element of pre-1950 Native American art into the mix. Santa Fe is the Southwest heartland of American Indian art and culture, and the show follows the city's centuries-old tradition of trade in Native art. It reaches far beyond the Southwestern pueblos and tribes to represent the cultural and geographical diversity of indigenous peoples throughout the U.S. and Canada. From the Navajo Nation to the Great Plains to the Eastern Woodlands and Northwest Coast, the show's selection of indigenous artworks is the finest to be found at a show dedicated solely to American Indian art.



LEFT: Blanket (detail). Navajo, American Southwest. C. 1890. Wool. 182.9 x 127 cm. Mark Sublette Medicine Man Gallery, Tucson, AZ. Photo courtesy of the Antique American Indian Art Show Santa Fe.

ABOVE: E. M. Hennings (1886–1956), Taos Pueblo. Oil on canvas. 76.2 x 76.2 cm. Robert L. Parsons Fine Art, Taos, NM. Photo courtesy of Objects of Art Santa Fe.



ABOVE: Mask of Iban Dayak, Sarawak, Malaysia. Late 19th–early 20th century. Wood, dammar resin, lime, black pigment. Joe Loux Asian and Tribal Art. Courtesy of Whitehawk, Santa Fe.



LEFT: Torso. Punuk, Alaska. AD 800–1400. Walrus ivory. H: 10.2 cm. Joe Loux Asian and Tribal Art. Courtesy of Whitehawk, Santa Fe.

BELOW: Installation view of the Antique Indian & Ethnographic Art Show. Courtesy of Whitehawk, Santa Fe.

